

USER MANUAL

4 SLOT TOASTER

MODE D'EMPLOI

GRILLE-PAIN 4 COMPARTIMENTS

MANUAL DE USO

TOSTADOR 4 COMPARTIMENTOS

EN

FR

ES



---

**Important information for the user**  
**Informations importantes pour l'utilisateur**  
**Información importante para el usuario**



**Instructions / Instructions / Instrucciones**



**Description / Description / Descripción**



**Use / Usage / Uso**



**Cleaning and maintenance / Nettoyage et entretien / Limpieza y mantenimiento**



**Safety instructions / Directives de sécurité / Instrucciones de seguridad**



**Information / Informations / Información**



**Advice / Conseil / Recomendaciones**

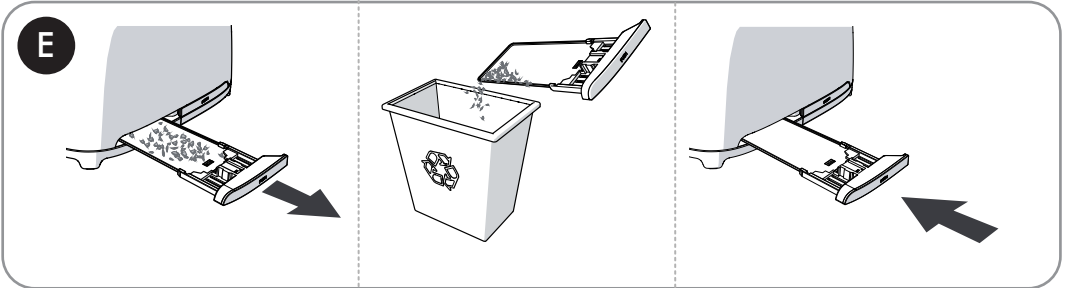
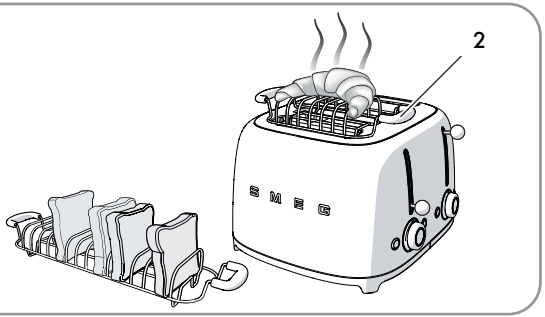
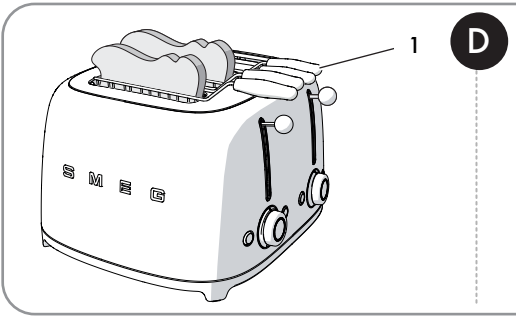
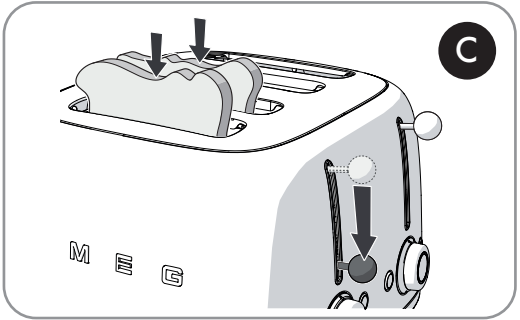
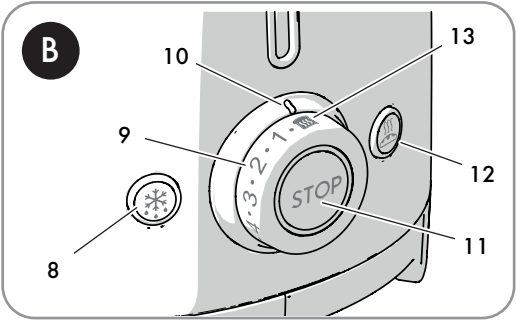
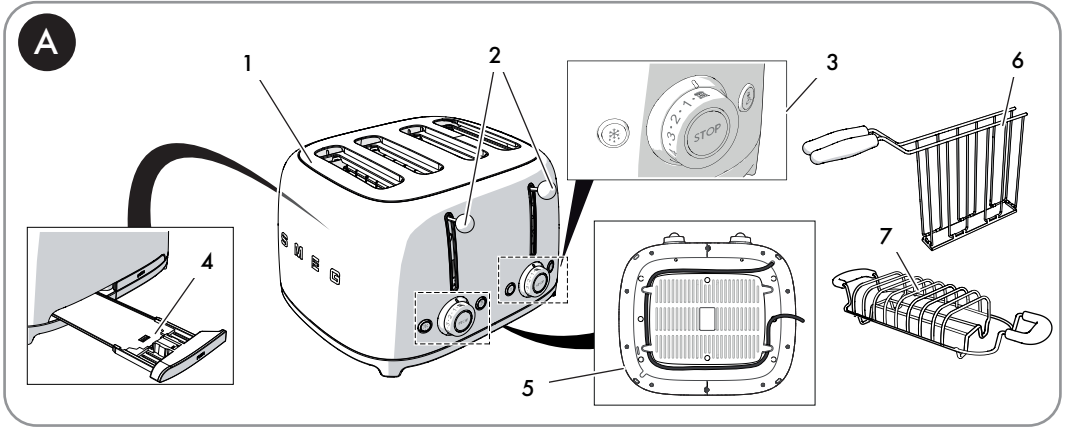
---

Dear Customer, Thank you for purchasing one of our appliances. Our products are unique because they combine iconic style with innovative technical solutions. They match perfectly with other products in our range and work equally well as a standalone design objects in your kitchen. We hope you enjoy using your new appliance!

Cher client, merci beaucoup pour votre achat. Nos produits sont uniques car ils combinent une forte recherche esthétique avec une conception technique innovante. Ils sont coordonnés avec d'autres produits de la gamme et peuvent constituer des éléments de design pour votre cuisine. Nous espérons que vous aimerez utiliser votre nouvel appareil !

Estimado Cliente, Le agradecemos por haber comprado uno de nuestros aparatos. Nuestros productos son únicos porque combinan un estilo icónico con soluciones técnicas innovadoras. Combinan perfectamente con otros productos de nuestra gama y trabajan igual de bien como objetos independientes en su cocina. Le deseamos que pueda aprovechar plenamente su nuevo electrodoméstico.

**SMEG S.p.A.**



# IMPORTANT SAFEGUARDS



NE

**WARNING:** If the instructions contained in this manual are not followed precisely, a fire or explosion may result causing property damage, personal injury or death.



## READ AND SAVE THESE INSTRUCTIONS

Your safety and the safety of others are very important.

We have provided many important safety messages throughout this manual and on the appliance.

Read all the instructions before using the appliance and always obey all safety messages.



## RECOGNIZE SAFETY INFORMATION

This is the safety alert symbol. This symbol alerts you to potential hazards that can result in severe personal injury or death.

## UNDERSTAND SIGNAL WORDS

A signal word – DANGER, WARNING, or CAUTION – is used with the safety alert symbol. DANGER denotes the most serious hazards. It means you could be killed or seriously injured if you do not immediately follow the instructions. WARNING means you could be killed or seriously injured if the instructions are not followed. CAUTION indicates a potentially hazardous situation, which, if not avoided, could result in minor to moderate injury.

## WARNING



- This appliance is intended for residential use only.
- Use this appliance only for its intended purpose. The manufacturer cannot be held liable for damage caused by improper use of this appliance.
- This appliance complies with current safety regulations. Improper use can result in personal injury and material damage.
- Read all the instructions before installing or using the appliance for the first time.
- Keep these operating instructions in a safe place and pass them on to any future user.



# IMPORTANT SAFEGUARDS

The safety messages will inform you of potential hazards, on how to avoid the risk of injury and what can occur if the instructions are not followed.

**IMPORTANT:** Observe all codes and ordinances in force.

**WARNING:** For your safety, the instructions contained in this manual must be followed to minimize the risk of fire or explosion and to prevent property damage, personal injury or death.

Do not store or use gasoline or other flammable vapors, liquids or materials near this or any other appliance.



**NOTE:** This appliance is NOT designed for installation in manufactured (mobile) homes or in recreational vehicles (RVs).

**DO NOT install this appliance outdoors.**

# IMPORTANT SAFEGUARDS



## WARNING



To reduce the risk of fire, electrical shock, personal injury, or damage when using the appliance, follow basic safety precautions, including the following:

NE

## 1 Instructions

This user manual is an integral part of the appliance and must therefore be kept in its entirety and in an accessible place for the entire working life of the appliance.

### 1.1 Intended use

- Only use the appliance indoors.
- This appliance has been designed exclusively for domestic use. It can only be used for toasting bread. Do not use the appliance for anything other than the intended use.
- Carefully follow the notes and suggestions provided in the user manual.
- Only use the appliance for toasting bread.
- The appliance can also be used for preparing toasted sandwiches but only if the specific sandwich racks are used (sold separately).
- If food or other substances come in to contact with the heating elements they may cause unpleasant odors, smoke and damage the appliance.
- The appliance is not designed to operate with external timers or with remote control systems.
- This appliance may be used by children aged at least 8 and by people of reduced physical and mental capacity, or lacking in experience in the use of electrical appliances, as long as they are supervised or instructed by adults who are responsible for their safety.
- Children must not be allowed to play with the appliance.
- Keep the appliance and its cord out of reach of children aged less than 8 years.

### 1.2 General safety instructions

Follow all safety instructions in order to use the appliance safely.

- Do not immerse the appliance, power cord or plug in water or any other type of liquid.
- Do not use the appliance if the power cord or plug appear to be damaged or if the appliance has been dropped or damaged in any way.
- Do not place the appliance on top of or close to gas or electric hobs that are turned on or in a heated oven.
- The power cord is short in order to prevent accidents. Do not use an extension cord.
- In the event of a fault, repairs should only be carried out by a qualified technician.
- Switch off the appliance immediately after use.
- Never try to put out a fire or flames with water: turn off the appliance, remove the plug from the power outlet and smother the flames with a fire blanket or other appropriate cover.
- Read this user manual carefully before using the appliance.
- Do not modify this appliance.
- Do not attempt to repair the appliance yourself. Contact a qualified engineer.
- If the power cord becomes damaged, contact technical support immediately.



# IMPORTANT SAFEGUARDS

## 1.3 For this appliance

- The toaster can become very hot during operation. Do not touch hot surfaces. Use the knob and the control functions, the bread lift and the other optional accessories.
- Remove the plug from the power outlet when the toaster is not in use, before cleaning it and if there is a fault. Allow the appliance to cool down before cleaning it.
- Bread may burn. Therefore, do not use the appliance close to or below combustible materials such as curtains.
- Make sure the bread lift is in the raised position before you plug in or remove the plug.
- Make sure that air can circulate freely around the toaster. Do not place anything on top of the toaster.
- Do not try to remove bread from the toaster when it is still in operation.
- Do not place metal objects such as knives, forks or spoons on the appliance when it is in use.
- Do not use metal objects such as knives, forks or spoons to clean the toaster.
- Cleaning and maintenance must not be carried out by children unless they are older than 8 and supervised.
- The use of accessory attachments not recommended by the appliance manufacturer may cause injuries.
- Do not let cord hang over edge of table or counter, or touch hot surfaces.
- Do not place on or near a hot gas or electric burner, or in a heated oven.
- Oversize foods, metal foil packages, or utensils must not be inserted in a toaster as they may involve a risk of fire or electric shock.
- A fire may occur if toasters are covered

or touching flammable material, including curtains, draperies, walls, and the like, when in operation.

- Do not attempt to dislodge food when toaster is plugged in.
- Do not operate unattended.
- When heating toaster pastries, always use the lightest toast color setting.

## 1.4 Manufacturer liability

The manufacturer declines any liability for damage to persons or property caused by:

- The use of the appliance for purposes other than those for which it was designed.
- Not having read the user manual.
- Tampering with any part of the appliance.
- The use of non-original spare parts.
- Failure to follow the safety instructions.

## 1.5 Disposal



**This appliance must be disposed of separately from other waste (Directive 2012/19/EU).**

- The appliance does not contain substances in quantities sufficient to be considered hazardous to health and the environment, in accordance with current European directives.
- Old electrical appliances must not be disposed of together with household waste! To comply with current legislation, electrical appliances, on reaching the end of their useful lives, should be taken to a recycling center for electrical and electronic waste. For further information, contact the relevant local government department or your nearest waste recycling center.
- Deliver these packing materials to the appropriate recycling center.



# IMPORTANT SAFEGUARDS



NE



## Live parts

### Electrocution hazard

- Disconnect the mains power supply.
- Disconnect the power cord from the electrical system.



## Suffocation hazard due to plastic packaging:

- Do not leave the packaging or any part of it unattended.
- Do not let children play with the plastic bags.



## Electrocution hazard

- Plug into a grounded 3-prong outlet.
- Do not remove the grounding prong.
- Do not use an adapter.
- Do not use an extension cord.
- Failure to follow these instructions can cause fires, electric shocks or even death.



## Improper use

### Electrocution hazard

- Always disconnect the plug from the power outlet before cleaning the toaster, crumb tray and optional accessories.



## Hot appliance

### Burn hazard

- Allow the appliance and the optional accessories to cool down before cleaning.



## Improper use

### Risk of damage to surfaces

- Do not use steam jets to clean the appliance.
- Do not use cleaning products containing chlorine, ammonia or bleach on parts made of steel or that have metal surface finishes (e.g. anodizing, nickel- or chrome-plating).
- Do not use abrasive or corrosive detergents (e.g. powder products, stain removers and metallic sponges).
- Do not use rough or abrasive materials or sharp metal scrapers.



## Hot appliance

- The sandwich rack and bun warmer become very hot during the toasting cycle. When removing them from the toaster, take care not to burn yourself by touching the metal parts.

# SAVE THESE INSTRUCTIONS



## Description

### 2 Product description (Fig. A - B)

- 1) Extra-wide slots with self-centering racks
- 2) Bread lift
- 3) Control panel
- 4) Crumb tray
- 5) Cable storage (under base)
- 6) TSSR01 Sandwich racks (optional accessory)
- 7) TSBW01 Bun Warmer (optional accessory)
- 8) Defrost function button
- 9) Browning control knob
- 10) Browning indicator
- 11) Stop button
- 12) Bagel function button
- 13) Reheat function

### 2.1 Control panel (Fig. B)

The toaster is fitted with two independent control panels. Each control panel controls 2 slots to allow different settings to be used for the available functions.

- Defrost function button (8 - Fig. B)

This function is useful when toasting frozen bread. During toasting, the defrost button lights up to indicate that the toasting cycle is active.

- Browning control knob (9 - Fig. B)

This control is used to select one of the 6 browning levels or the Reheat function. During toasting, the central LED lights up to indicate that the toasting cycle is active.

- Browning indicator (10 - Fig. B)

The Browning indicator shows the selected browning level or the selected Reheat function.

- Stop button (11 - Fig. B)

The stop button can be used to cancel or stop the toasting cycle at any time.

- Bagel function button (12 - Fig. B)

This function allows you to toast one side of a bagel, or any other kind of bread, without toasting the other side. During toasting, the Bagel button lights up to indicate that the function is active.

- Reheat function (13 - Fig. B)

This function is used to reheat cold toast or to continue a toasting cycle if the result is not satisfactory. During toasting, the central LED lights up to indicate that the toasting cycle is active.



## 3 Use



The appliance can be used safely at both 50 Hz and 60 Hz without making any changes to the settings.



### Tips and suggestions

Your toaster has a 3-prong grounded plug. To reduce the risk of electrical shock, it is only possible to insert this plug into an outlet in one way. If the plug does not fit into the outlet, contact a qualified electrician. Do not modify the plug in any way.

### 3.1 Before first use

- 1) Remove all stickers and any packing or printed material that might have fallen inside during shipping or handling. Do not probe the inside the toaster with a metal object.
- 2) Clean the outside of the toaster with a damp cloth.
- 3) Use the toaster for the first time without slices of bread in it.
- 4) Turn the browning control to the maximum position and press the bread lift down. This will burn off any dust that has entered the toaster during production or transport.



During first use there may be some smoke and odors.



### Tips and suggestions

- Remember that the type of bread you use will affect the toasting times. The fresher the bread, the longer it will take to toast. Different types of bread and different moisture contents may require different browning levels. Different kinds of bread have different moisture content and will require different browning levels. For example, fruit breads generally toast much quicker and freshly baked breads will take longer as they have a higher moisture content.
  - The first batch of toast you make enables the heating elements to reach the correct toasting temperature. Please note that further batches of toast could take less time.
- For best results:
- Toast only one type of bread at a time.
  - Toast slices of bread having the same thickness.
  - Use slices of bread no thicker than 2.5 cm.
  - If you are using hand-cut bread, please try to cut slices as evenly as possible. Uneven slices will toast unevenly.
  - Remember that if you use very thin or broken slices of bread, they will burn.



### Warning

If the appliance is not connected to the mains power supply, the bread lift will not lock.



## 3.2 Operation

If necessary, shorten the cord by wrapping it under the base (**5 - Fig. A**).

- 1) Plug in the toaster.
- 2) Place the bread into the slot (**Fig. C**).
- 3) Remember that as bread is not normally square, you may need to turn the bread on its side to get a better fit and optimize the toasting surface area.
- 4) Choose the required level of browning (Browning levels 1 to 6, from light to dark) or the "Reheat function" (**13 - Fig. B**).
- 5) Push the lever down until it clicks to start the toasting cycle (**Fig. C**).
- 6) If required select the additional functions Defrost (**8 - Fig. B**) or Bagel (**12 - Fig. B**) or both of them together.
- 7) The heating element now switches on. The bread is centered automatically for even toasting.
- 8) The toasted bread will pop up automatically when the toast is ready.
- 9) If the toast is not sufficiently browned and requires more time, press the Reheat button to extend the toasting time.

## 3.3 Special functions

### Canceling / stopping the toasting cycle

The toasting cycle can be canceled or stopped at any time by pushing the button (**11 - Fig. B**).

### Defrost (**8 - Fig. B**)

This function gently defrosts frozen bread and toasts it to the selected level of browning.

To use the function, simply insert the bread into the slot, select the required level of browning, push the bread lift downwards until it clicks and then press the defrost button: the indicator light of the button will turn on. The toasting time will be automatically increased to allow the bread to defrost and brown correctly. The light of the Defrost button will switch off when the toast pops up automatically.

### Bagel (**12 - Fig. B**)

This special function is ideal for toasting one side only, for bagels, flat bread, English muffins, baguettes, etc. To use the function, simply insert the bread into the slot with the side that you want toasted facing the outside. Select the required browning level, press the bread lift down until it clicks, then push the Bagel function button, which will light up. Once the bread has been toasted, it will pop up automatically and the Bagel function light will switch off.

### Reheat (**13 - Fig. B**)

This function is used to reheat cold sandwiches or to continue a toasting cycle if the result is not satisfactory. To use the function, simply insert the bread into the slot, select the Reheat function on the browning control knob and push the bread lift downwards until it clicks. The central light of the browning control knob will light up. When the toasting cycle has finished, the bread will pop up automatically and the light of the control knob will switch off.



Defrost or Reheat can be selected at the same time as the Bagel function.



### 3.4 Using optional accessories (6, 7 - Fig. A)



Accessories may differ according to the model.

#### Sandwich racks (6 - Fig. A)

The sandwich racks are ideal for toasting filled sandwiches, or for easier handling of smaller items such as bagels.



#### Tips and suggestions

- Lightly butter the outside of the bread, this prevents burning and helps to warm the filling. Do not butter the inside of the sandwich.
- For best results, use thinly sliced ingredients and finely grated cheese.
- For best results use cold meat (ham, turkey etc.) at room temperature, not straight from the refrigerator.
- Do not overfill the sandwich.
- If using a low browning setting, the filling might not heat through correctly. In this case, at the end of the toasting cycle, leave the toast inside the toasting slot for longer, or extend the time by using the reheat button.

#### How to use (1 - Fig. D):

- 1) Open the rack with the handles.
- 2) Insert the sandwich into the rack.
- 3) Close the handles of the sandwich rack together to grip the sandwich.
- 4) Insert the sandwich rack into the slot and select a browning level. If a little more browning is required, you can use the reheat button to extend the toasting time.
- 5) Push the bread lift downwards until it clicks to start the toasting cycle.
- 6) Remove the sandwich rack from the toaster when the toasting cycle ends.

#### Bun Warmer (7 - Fig. A)

The bun warmer is useful for warming small bread rolls, flat bread or pastries.

#### How to use (2 - Fig. D):

- 1) Place the bun warmer on top of the toaster, making sure that the wire feet at the ends fit into the slots of the toaster.
- 2) Place small bread rolls, flat bread or pastries on top of the warmer and set the browning level to "1" (no higher).
- 3) Push the bread lift downwards until it clicks to start the toasting cycle.



## Cleaning and maintenance / What to do if...

### 4 Cleaning and care

#### 4.1 Cleaning the surfaces

To keep the surfaces in good condition, clean regularly after use. Let them cool first.

Never use products that contain abrasives or chlorine-based acids.

Pour the product onto a damp cloth and wipe the surface, then wipe thoroughly and dry with a soft cloth or a microfiber cloth.



##### Tips and suggestions

If grease or oil splatters on the toaster, wipe it off immediately using a clean, damp cotton cloth.

Any other servicing should be performed by an authorized service representative.

#### 4.2 Food stains or residues

Do not for any reason use steel sponges or sharp scrapers, as they will damage the surfaces.

Use ordinary, non-abrasive products and wooden or plastic tools if necessary. Wipe thoroughly and dry with a soft cloth or microfiber cloth.

#### 4.3 Cleaning the crumb tray (Fig. E)

- 1) Push the crumb tray (4 - Fig. A) to unlock it and then pull to slide it out and empty it. Empty the crumb tray after each use.



##### Tips and suggestions

The crumb tray is hand-washable. Always dry the tray thoroughly before putting it back in the toaster.

- 2) Put the crumb tray back in the toaster. Press it in firmly until it clicks into position. Do not use the toaster without the crumb tray in the proper position.
- 3) Do not use a toaster cover.

#### 4.4 Cleaning the optional sandwich rack and bun warmer

Wash the sandwich rack and bun warmer by hand in warm soapy water. After washing, rinse and dry them thoroughly with a soft cloth.

### What to do if...

If your toaster should fail to operate, check the following:

- Check that the toaster is plugged into a grounded 3-prong electrical outlet. If it is, unplug the toaster.
- Plug in the toaster.
- If the toaster still does not work, check the household fuse or circuit breaker.

If the problem cannot be solved:

- See the Smeg Warranty and Service sections.

The manufacturer reserves the right to make any changes deemed necessary for the improvement of its products without prior notice. The illustrations and descriptions contained in this manual are therefore not binding and are merely indicative.

Le fabricant se réserve le droit d'apporter, sans préavis, toutes les modifications qu'il jugera utiles pour l'amélioration de ses produits. Les illustrations et les descriptions figurant dans ce manuel ne sont pas contraignantes et n'ont qu'une valeur indicative.

El fabricante se reserva el derecho a aportar sin aviso previo todas las modificaciones que considere necesarias para la mejora de sus propios productos. Las ilustraciones y las descripciones contenidas en este manual no comprometen, por tanto, al fabricante y tienen un valor meramente indicativo.