

Libretto d' uso

User manual

Manuel d'utilisation

Gebrauchsanleitung

Gebruiksaanwijzing

Manual de uso

Livro para utilização

Brugsvejledning

Användningshandbok

Руководство по эксплуатации

Instrukcja użytkowania

Bruksveiledning

Käyttöohjeet

كتيب الاستعمال

*KSEG120XE-2 - KSEG90XE-2
KSEG90VXNE-2 - KSEG90VXBE-2*

INDICE

IT

INFORMAZIONI SULLA SICUREZZA	5
CARATTERISTICHE	8
INSTALLAZIONE	9
USO	10
PULIZIA E MANUTENZIONE	12

INDEX

EN

SAFETY INFORMATION	14
CHARACTERISTICS	17
INSTALLATION	18
USE	19
CARE AND CLEANING	21

SOMMAIRE

FR

CONSIGNES DE SÉCURITÉ	23
CARACTÉRISTIQUES	26
INSTALLATION	27
UTILISATION	28
NETTOYAGE ET ENTRETIEN	30

INHALTSVERZEICHNIS

DE

SICHERHEITSINFORMATIONEN	32
CHARAKTERISTIKEN	35
MONTAGE	36
BEDIENUNG	37
REINIGUNG UND WARTUNG	39

INHOUDSOPGAVE

NL

VEILIGHEIDSINFORMATIE	41
EIGENSCHAPPEN	44
INSTALLATIE	45
GEbruik	46
REINIGING EN ONDERHOUD	48

INDICE

ES

INFORMACIÓN DE SEGURIDAD	50
CARACTERÍSTICAS	53
INSTALACIÓN	54
USO	55
LIMPIEZA Y MANTENIMIENTO	57

ÍNDICE

PT

INFORMAÇÕES DE SEGURANÇA	59
CARACTERÍSTICAS	62
INSTALAÇÃO	63
UTILIZAÇÃO	64
LIMPEZA E MANUTENÇÃO	66

INDHOLD

DK

RENGØRING OG VEDLIGEHOLDELSE	68
APPARATBESKRIVELSE	71
INSTALLATION	72
BRUG	73
RENGØRING OG VEDLIGEHOLDELSE	75

INNHold

NO

SIKKERHETSINFORMASJON	77
EGENSKAPER	80
INSTALLASJON	81
BRUK	82
RENGJØRING OG VEDLIKEHOLD	84

УКАЗАТЕЛЬ

RU

ИНФОРМАЦИЯ ПО БЕЗОПАСНОСТИ	86
ХАРАКТЕРИСТИКИ	89
УСТАНОВКА	90
ЭКСПЛУАТАЦИЯ	91
ОЧИСТКА И ОБСЛУЖИВАНИЕ	93

SPIS TREŚCI

PL

INFORMACJE DOTYCZĄCE BEZPIECZEŃSTWA	95
WŁAŚCIWOŚCI TECHNICZNE	98
INSTALACJA	99
UŻYTKOWANIE	100
CZYSZCZENIE I KONSERWACJA	102

INNEHÅLL

SE

SÄKERHETSINFORMATION	104
EGENSKAPER	107
INSTALLATION	108
ANVÄNDING	109
NGÖRING OCH UNDERHÅL	111

SISÄLTÖ

FI


PUHDISTUS JA HUOLTO	113
MITAT JA OSAT	116
ASENNUKSEEN	117
KÄYTTÖ	118
PUHDISTUS JA HUOLTO	120


الفهرس

SA

معلومات فيما يخص السلامة	122
الخصائص	125
التركيب	127
الاستخدام	128
التنظيف والصيانة	130


SAFETY INFORMATION

 For your safety and correct operation of the appliance, read this manual carefully before installation and use. Always keep these instructions with the appliance even if you move or sell it. Users must fully know the operation and safety features of the appliance.


 The wire connection has to be done by specialized technician.

- The manufacturer will not be held liable for any damages resulting from incorrect or improper installation.
- The minimum safety distance between the cooker top and the extractor hood is 650 mm (some models can be installed at a lower height, please refer to the paragraphs on working dimensions and installation).
- If the instructions for installation for the gas hob specify a greater distance, this must be respected.
- Check that the mains voltage corresponds to that indicated on the rating plate fixed to the inside of the hood.
- Means for disconnection must be incorporated in the fixed wiring in accordance with the wiring rules.
- For Class I appliances, check that the domestic power supply guarantees adequate earthing.
- Connect the extractor to the exhaust flue through a pipe of minimum diameter 120 mm. The route of the flue must be as short as possible.
- Regulations concerning the discharge of air have to be fulfilled.
- Do not connect the extractor hood to exhaust ducts carrying combustion fumes (boilers, fireplaces, etc.).

- If the extractor is used in conjunction with non-electrical appliances (e.g. gas burning appliances), a sufficient degree of aeration must be guaranteed in the room in order to prevent the backflow of exhaust gas. When the cooker hood is used in conjunction with appliances supplied with energy other than electric, the negative pressure in the room must not exceed 0,04 mbar to prevent fumes being drawn back into the room by the cooker hood.
- The air must not be discharged into a flue that is used for exhausting fumes from appliances burning gas or other fuels.
- If the supply cord is damaged, it must be replaced from the manufacturer or its service agent.
- Connect the plug to a socket complying with current regulations, located in an accessible place.
- With regards to the technical and safety measures to be adopted for fume discharging it is important to closely follow the regulations provided by the local authorities.


 **WARNING:** Before installing the Hood, remove the protective films.

- Use only screws and small parts in support of the hood.


 **WARNING:** Failure to install the screws or fixing device in accordance with these instructions may result in electrical hazards.

- Do not look directly at the light through optical devices (binoculars, magnifying glasses...).
- Do not flambè under the range hood; risk of fire.
- This appliance can be used by children aged from 8 years and above and persons with reduced physical, sensory or mental capabilities or lack of experience and knowledge if they have been given supervision or instruction concerning use of the appliance in a safe way and understand the hazards involved. Children shall not play with the appliance. Cleaning and user maintenance shall not be made by children without supervision.
- Children should be supervised to ensure that they do not play with the appliance.

- The appliance is not to be used by persons (including children) with reduced physical, sensory or mental capabilities, or lack of experience and knowledge, unless they have been given supervision or instruction.

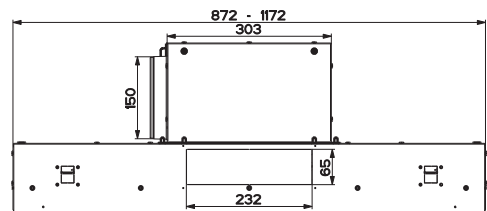
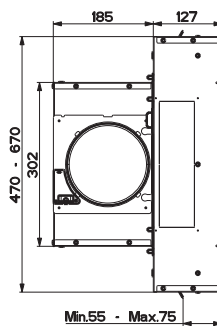
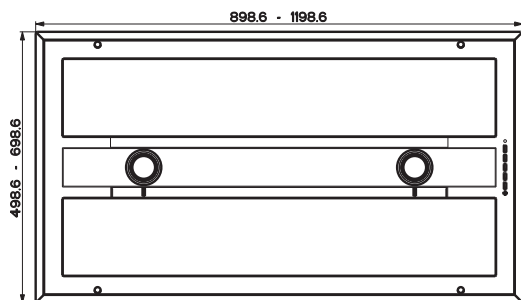
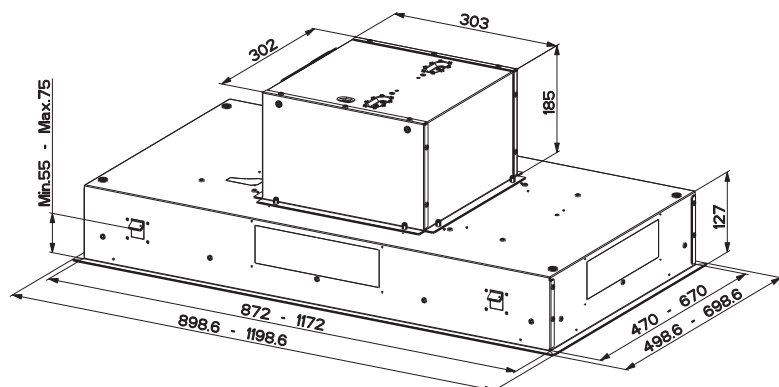
 Accessible parts may become hot when used with cooking appliances.

- Clean and/or replace the Filters after the specified time period (Fire hazard). See paragraph Care and Cleaning.
- There shall be adequate ventilation of the room when the range hood is used at the same time as appliances burning gas or other fuels (not applicable to appliances that only discharge the air back into the room).

- The symbol  on the product or on its packaging indicates that this product may not be treated as household waste. Instead it shall be handed over to the applicable collection point for the recycling of electrical and electronic equipment. By ensuring this product is disposed of correctly, you will help prevent potential negative consequences for the environment and human health, which could otherwise be caused by inappropriate waste handling of this product. For more detailed information about recycling of this product, please contact your local city office, your household waste disposal service or the shop where you purchased the product.

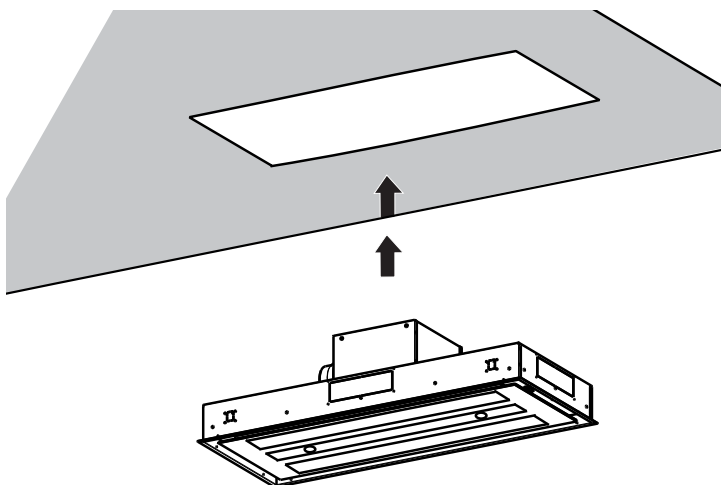
CHARACTERISTICS

Dimensions



INSTALLATION

Fixing the Hood



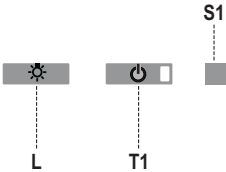
- In all cases where the ceiling is not strong enough at the suspension point, the installer must provide strengthening using suitable plates and backing pieces anchored to the structurally sound parts.

ELECTRICAL CONNECTION

- Connect the hood to the mains through a two-pole switch having a contact gap of at least 3 mm..

USE

Control panel

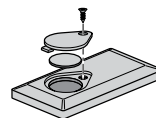


Button	Function	Led
L	Turns the lights ON/OFF at maximum intensity.	-
	Press and hold the button for approximately 4 seconds, with all the loads turned off (Motor and Lights), to turn the Activated Charcoal Filter alarm on/off.	LED S1 flashes twice = alarm ON. LED S1 flashes once = alarm OFF.
T1	Turns the motor on/off at speed one.	-
	Press and hold the button for approximately 2 seconds, with all the loads turned off (Motor and Lights), to reset the Activated Charcoal Filter alarm.	LED S1 turns OFF (Fixed or Flashing).
S1	Signals the Metal Grease Filter saturation alarm, indicating that it is necessary to wash the filters. The alarm is triggered after the Hood has been in operation for 100 working hours.	Fixed
	When this is activated, it signals the Activated Charcoal Filter saturation alarm, indicating that the filter must be changed; the Metal Grease Filters must also be washed. The Activated Charcoal Filter saturation alarm comes into operation after the Hood has been working for 200 hours.	Flashing

REMOTE CONTROL

This appliance can be commanded using a remote control, powered by a CR2032 type 3 V battery (not supplied).

- Do not place the remote control near heat sources.
- Do not discard the batteries with normal waste, they must be put into the specific containers.



Control panel

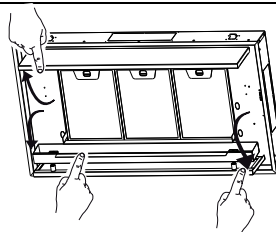


		Turns the Motor On/Off.	-
		-	-
		-	-
		-	-
		Turns the Hood lights On/Off at maximum intensity. Press and hold for 2sec to turn the Hood lights On/Off at reduced intensity.	-
		INTENSIVE - Activates Intensive speed from any other speed. To disable it, simply press the same button again or turn the motor off. - Intensive speed is timed to run for 6 minutes. At the end of the 6 minutes the system automatically returns to the speed set previously.	-
		Press briefly for the Delay Function: Can only be activated if the Intensive or 24h function is not active. Activates and deactivates total shutdown of the hood (motor+lights) after 30 minutes: To disable the Delay, simply press the button again or turn the motor off.	The led on the motor button (on the hood controls) will flash once every 0.5 seconds.
		Press and hold for 2sec for the 24H Function: Can only be activated if the Intensive or Delay function is not active. Activates and deactivates the 24H function for 10 minutes every hour, for 24 hours. After this time it is deactivated.	The led on the motor button (on the hood controls) will flash once every 2 seconds.
		Increases the speed of the Motor.	-
		Decreases the speed of the Motor.	-

CARE AND CLEANING

Opening Panel

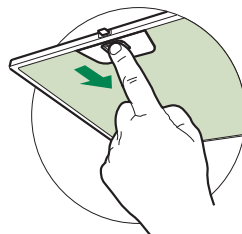
- Open the Panel by pulling it.
- Clean the outside with a damp cloth and neutral detergent.
- Clean the inside using a damp cloth and neutral detergent; do not use wet cloths or sponges, or jets of water; do not use abrasive substances.



Grease filters

CLEANING METAL SELF- SUPPORTING GREASE FILTERS

- The filters must be cleaned every 2 months of operation, or more frequently for particularly heavy usage, and can be washed in a dishwasher.
- Pull the comfort panels to open them.
- Remove the filters one by one pushing them towards the back side of the hood unit and simultaneously pulling downwards.
- Any kind of bending of the filters has to be avoided when washing them. Before fitting them again into the hood make sure that they are completely dry. (The colour of the filter surface may change throughout the time but this has no influence to the filter efficiency).
- When fitting the filters into the hood pay attention that they are mounted in correct position the handle facing outwards.
- Close the comfort panel.

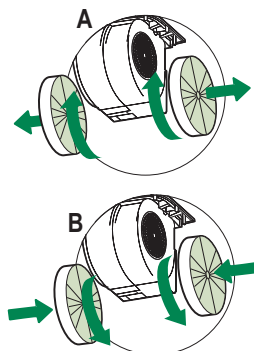


Activated charcoal filter (Recirculation version)

These filters are not washable and cannot be regenerated, and must be replaced approximately every 4 months of operation, or more frequently with heavy usage.

REPLACING THE ACTIVATED CHARCOAL FILTER

- Open the comfort panels pulling them downwards.
- Remove the metal grease filters
- Remove the saturated activated charcoal filter as shown (A).
- Fit the new filters (B).
- Replace the metal grease filters.
- Close the comfort panels.



Lighting unit

- For replacement contact technical support ("To purchase contact technical support").