



## **LARDER**

Instruction Booklet

## **KÜHLGERÄT**

Bedienungsanleitung

## **RÉFRIGÉRATEUR**

Guide D'utilisation

## **FRIGORIFERO MONOPORTA**

Manuale di istruzioni

## **KOELKAST**

Handleiding

## **REFRIGERADOR**

Manual de Instrucciones

## **FRIGORÍFICO**

Manual de instruções

**FA402PXNE**

# Index

<b>BEFORE USING YOUR FRIDGE .....</b>	<b>2</b>
General warnings .....	2
Old and out-of-order fridges .....	4
Installing and Operating your Fridge .....	5
Before Using your Fridge .....	5
Information on No-Frost Technology .....	6
<b>USAGE INFORMATION.....</b>	<b>7</b>
Display and control panel .....	7
Cooler Set Button .....	7
Operating your fridge.....	8
Super cool mode .....	8
Economy mode .....	8
Cooler temperature settings .....	8
Door Open Alarm Function .....	8
Warnings About Temperature Settings .....	8
Accessories .....	9
Chiller shelf.....	9
Fresh dial .....	10
<b>ARRANGING FOOD IN THE APPLIANCE .....</b>	<b>10</b>
<b>CLEANING AND MAINTENANCE .....</b>	<b>11</b>
<b>SHIPMENT AND REPOSITIONING.....</b>	<b>11</b>
Repositioning the door .....	12
<b>BEFORE CALLING SERVICE.....</b>	<b>12</b>
Tips for saving energy .....	14
<b>THE PARTS OF THE APPLIANCE AND THE COMPARTMENTS .....</b>	<b>15</b>

## BEFORE USING YOUR FRIDGE

### General warnings

**WARNING:** Keep ventilation openings, in the appliance enclosure or in the built-in structure, clear of obstruction.

**WARNING:** Do not use mechanical devices or other means to accelerate the defrosting process, other than those recommended by the manufacturer.

**WARNING:** Do not use electrical appliances inside the food storage compartments of the appliance, unless they are of the type recommended by the manufacturer.

**WARNING:** Do not damage the refrigerant circuit.

**WARNING:** In order to avoid any hazards resulting from the instability of the appliance, it must be fixed in accordance with the following instructions:

**WARNING:** When positioning the appliance, ensure the supply cord is not trapped or damaged.

**WARNING:** Do not locate multiple portable socket-outlets or portable power supplies at the rear of the appliance.



SYMBOL ISO 7010 W021

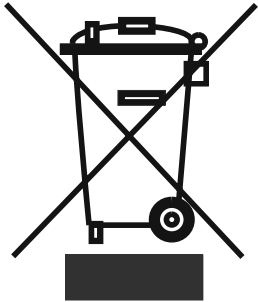
**Warning:** Risk of fire / flammable materials

- If your appliance uses R600a as a refrigerant (this information will be provided on the label of the cooler) you should take care during transportation and installation to prevent the cooler elements from being damaged. R600a is an environmentally friendly and natural gas, but it is explosive. In the event of a leak due to damage of the cooler elements, move your fridge away from open flames or heat sources and ventilate the room where the appliance is located for a few minutes.
- While carrying and positioning the fridge, do not damage the cooler gas circuit.
- Do not store explosive substances such as aerosol cans with a flammable propellant in this appliance.

- This appliance is intended to be used in household and domestic applications such as:
  - staff kitchen areas in shops, offices and other working environments.
  - farm houses and by clients in hotels, motels and other residential type environments.
  - bed and breakfast type environments;
  - catering and similar non-retail applications.
- If the socket does not match the refrigerator plug, it must be replaced by the manufacturer, a service agent or similarly qualified persons in order to avoid a hazard.
- A specially grounded plug has been connected to the power cable of your refrigerator. This plug should be used with a specially grounded socket of 16 amperes. If there is no such socket in your house, please have one installed by an authorised electrician.
- This appliance can be used by children aged from 8 years and above and persons with reduced physical, sensory or mental capabilities or lack of experience and knowledge if they have been given supervision or instruction concerning use of the appliance in a safe way and understand the hazards involved. Children shall not play with the appliance. Cleaning and user maintenance shall not be made by children without supervision.
- If the supply cord is damaged, it must be replaced by the manufacturer, an authorised service agent or similar qualified persons, in order to avoid a hazard.
- This appliance is not intended for use at altitudes exceeding 2000 m.

## Old and out-of-order fridges

- If your old fridge has a lock, break or remove the lock before discarding it, because children may get trapped inside it and may cause an accident.
- Old fridges and freezers contain isolation material and refrigerant with CFC. Therefore, take care not to harm environment when you are discarding your old fridges.



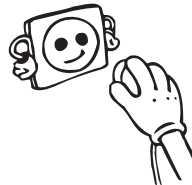
Please ask your municipal authority about the disposal of the WEEE for the reuse, recycle and recovery purposes.

### Notes:

- Please read the instruction manual carefully before installing and using your appliance. We are not responsible for the damage occurred due to misuse.
- Follow all instructions on your appliance and instruction manual, and keep this manual in a safe place to resolve the problems that may occur in the future.
- This appliance is produced to be used in homes and it can only be used in domestic environments and for the specified purposes. It is not suitable for commercial or common use. Such use will cause the guarantee of the appliance to be cancelled and our company will not be responsible for the losses to be occurred.
- This appliance is produced to be used in houses and it is only suitable for cooling / storing foods. It is not suitable for commercial or common use and/or for storing substances except for food. Our company is not responsible for the losses to be occurred in the contrary case.

### Safety warnings

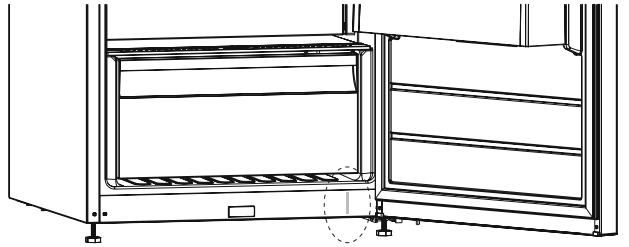
- Do not use multiple receptacles or extension cord.
- Do not plug in damaged, torn or old plugs.
- Do not pull, bend or damage the cord.



- This appliance is designed for use by adults, do not allow children to play with the appliance or let them hang off the door.
- Do not plug-in or out the plug from the receptacle with wet hands to prevent electrocution!
- Do not place explosive or flammable material in your fridge for your safety. Place drinks with higher alcohol amount vertically and by closing their necks tightly in the fridge.
- Do not cover the body or top of fridge with lace. This affects the performance of your fridge.
- Fix the accessories in the fridge during transportation to prevent damage to accessories.



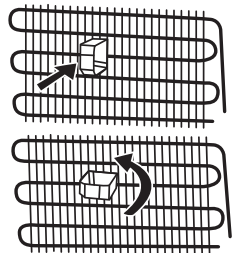
- When the door of the cooler is closed, a vacuum seal will form. Wait for about 1 minute before reopening it.
- This application is optional for easy opening of the door. With this application, a little condensation may occur around this area and you may remove it.
- Do not use plug adapter.



## Installing and Operating your Fridge

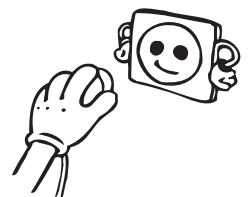
*Before starting to use your fridge, you should pay attention to the following points:*

- Operating voltage for your fridge is 220-240 V at 50Hz.
- We do not take the responsibility of the damages that occur due to ungrounded usage.
- Place your fridge in a place that it would not be exposed to direct sunlight.
- Your appliance should be at least 50 cm away from stoves, ovens and heater cores, and should be at least 5 cm away from electrical ovens.
- It should never be used outdoors or left under the rain.
- When your fridge is placed next to a deep freezer, there should be at least 2 cm between them to prevent humidity on the outer surface.
- Do not place anything on your fridge, and install your fridge in a suitable place so that at least 15 cm is available on the upper side.
- If you will place your fridge next to your kitchen cabinets, leave a space of 2 cm between them.
- Fit the plastic wall spacers to the condenser at the back of the refrigerator in order to prevent leaning to the wall for good performance.
- Install the distance adjustment plastic (the part with black vanes at the rear) by turning it 90° to prevent the condenser from touching the wall.
- Refrigerator should be placed against a wall with a free distance not exceeding 75 mm.
- The adjustable front legs should be stabilized in an appropriate height to allow your fridge to operate in a stable and proper way. You can adjust the legs by turning them clockwise (or in the opposite direction). This should be done before placing food in the fridge.
- Before using your fridge, wipe all parts with warm water added with a tea spoonful of sodium bicarbonate, and then rinse with clean water and dry. Place all parts after cleaning.



## Before Using your Fridge

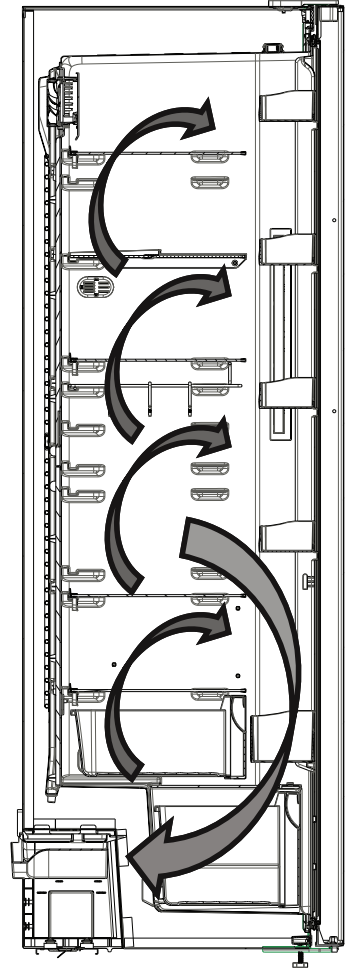
- When it is operated for the first time or after transportation, keep your fridge in the upright position for 3 hours and plug it on to allow efficient operation. Otherwise, you may damage the compressor.
- Your fridge may have a smell when it is operated for the first time; the smell will fade away when your fridge starts to cool.



## Information on No-Frost Technology

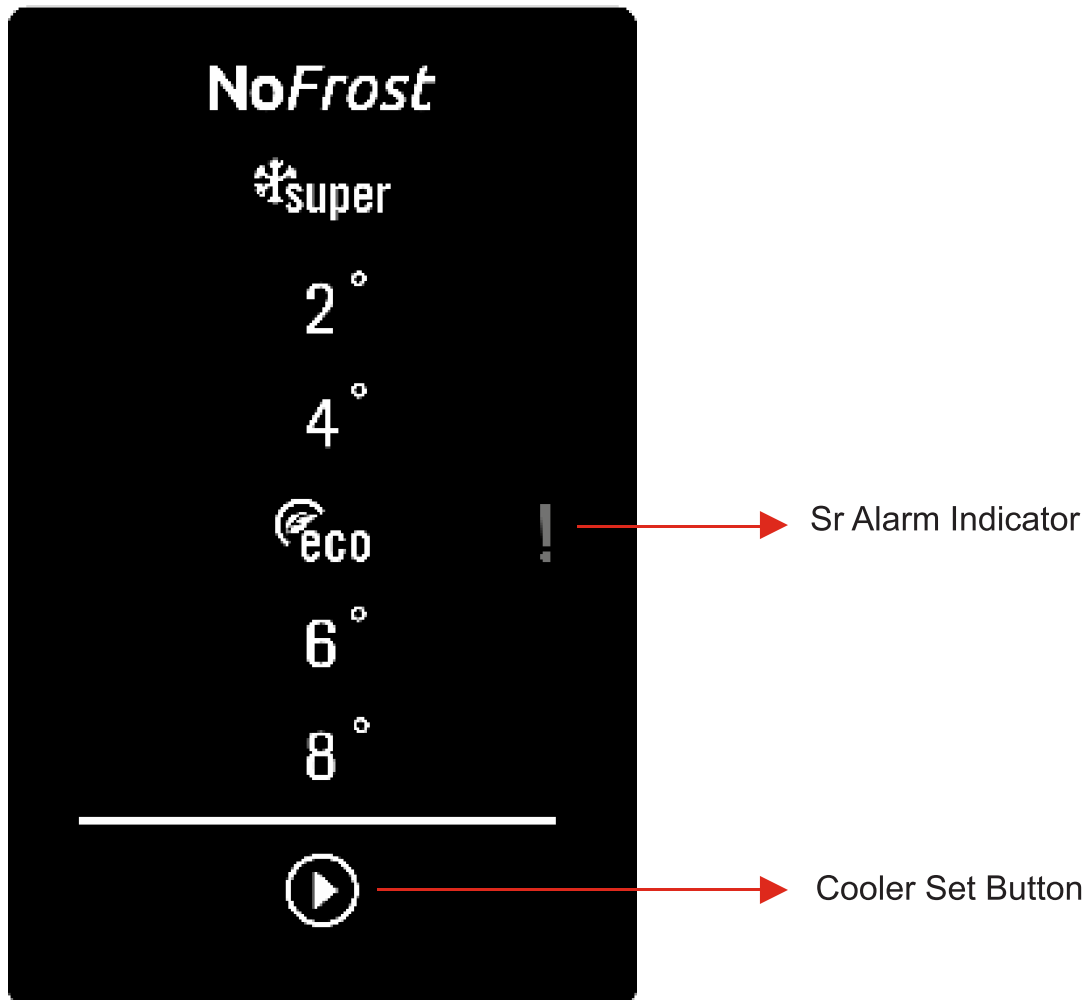
No-frost refrigerators differ from other static refrigerators in their operating principle.

In normal refrigerators the humidity entering the refrigerators due to opening the door and the humidity inherent in the food causes freezing in the backside of air duct. To defrost the frost and ice in the backside of air duct, you are periodically required to turn off the refrigerator, place the food that needs to be kept cooled in a separately cooled. The situation is completely different in no-frost refrigerators. Dry and cold air is blown into the refrigerator compartment homogeneously and evenly from several points via a blower fan. Cold air dispersed homogeneously and evenly between the shelves cools all of your food equally and uniformly, thus preventing humidity and freezing. Therefore your no-frost refrigerators allows you ease of use, in addition to its huge capacity and stylish appearance.



## USAGE INFORMATION

### Display and control panel



### Cooler Set Button

The cooler set button allows changes to be made to the temperature of the cooler compartment. Super cool and economy mode can also be activated using this button.

### Sr Alarm

Sr alarm will change to red and an alarm will sound if any problems occur.



## Operating your fridge

### Super cool mode

#### Activating Super Cool Mode

- Push the cooler set button until the super cool symbol illuminates. The buzzer will sound twice and the mode will be set.

#### During Super Cool Mode

- Super cool mode can be cancelled in the same way it is selected.

**Note:** Super cool mode will automatically cancel after 5 hours, depending on the environmental temperature or when the refrigerator sensor reaches a sufficiently low temperature.

### Economy mode

#### Activating Economy Mode

- Press the cooler set button until the economy symbol illuminates.
- If no button is pressed for 1 second the mode will be set and the buzzer will sound twice as confirmation.
- To cancel, press the cooler set button

### Cooler temperature settings

- The initial temperature value for the cooler setting indicator is "Eco".
- Press the cooler set button once
- When you first press the button, the previous value will appear on the setting indicator of the cooler.
- Whenever you press this button, a lower temperature will be set (+8°C, +6°C, economy, +4°C, +2°C, or super cool).
- If you press the cooler set button until the super cool symbol appears on the cooler setting indicator, and do not press any buttons for 1 second, super cool will flash.
- If you continue to press the same button, it will restart from +8°C.

### Door Open Alarm Function

If cooler door is opened more than 2 minutes, appliance sounds 'beep beep'.

### Warnings About Temperature Settings

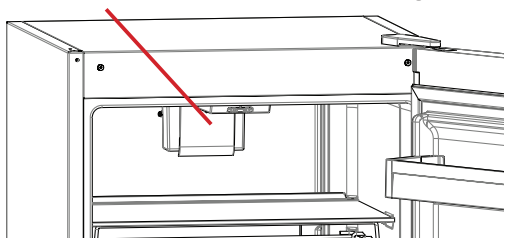
- Do not switch to another adjustment before completing a setting.
- The temperature setting should be done by taking into consideration how often the fridge door is opened and closed, how much food is stored in it and the ambient temperature in which the fridge is located.
- Depending on the ambient temperature, your fridge must operate nonstop up to 24 hours in order to cool down completely after it is plugged in for the first time. During this period, do not open the doors of your fridge frequently and do not overfill.
- To prevent any damage on the compressor of your fridge when you want to restart your fridge after unplugging it or after a power failure is restored, there is a function which makes your fridge operate after a 5-minute delay. Your fridge will start operating

normally after 5 minutes.

- Fridge has been designed to operate in the ambient temperature ranges specified in the standards according to the class of climate mentioned in the information label. The operation of the fridge in environments with temperature values not complying with the ones specified is not recommended for cooling efficiency.
- Your appliance is designed to operate at ambient temperatures between 10°C - 43°C.

Climate Class	Ambient Temperature (°C)
T	Between 16 and 43 (°C)
ST	Between 16 and 38 (°C)
N	Between 16 and 32 (°C)
SN	Between 10 and 32 (°C)
T/SN	Between 10 and 43 (°C)

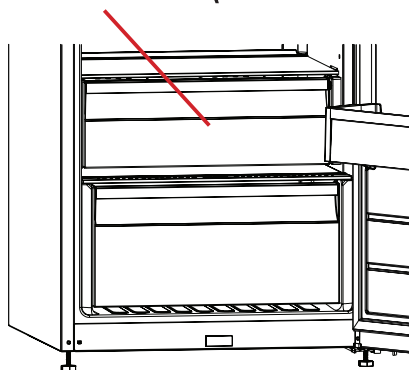
**If turbo fan is available on your product ;**



Do not block air inlet and outlet openings when storing food, otherwise air circulation that provided by turbo fan will be impaired.

## Accessories

### Chiller shelf (In some models)



Keeping food in the Chiller compartment instead of the freezer or refrigerator compartment allows food retain freshness and flavour longer, while preserving its fresh appearance. When chiller tray becomes dirty, remove it and wash it with water.

(Water freezes at 0°C, but foods containing salt or sugar freeze at temperature lower than that)

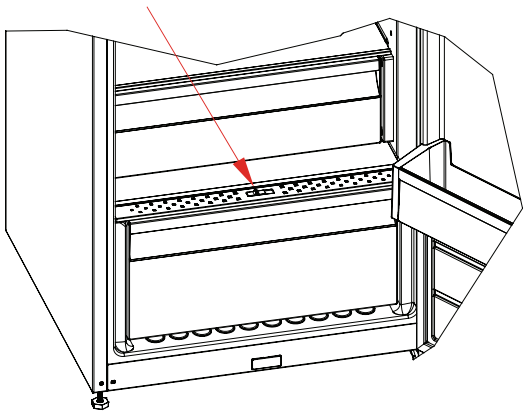
Normally people use the chiller compartment for raw fish, lightly pickled, rice, etc...

**! Do not put foods you want to freeze or ice trays in order to make ice.**

### Removing the Chiller shelf

- Pull the chiller shelf out toward you by sliding on rails.
- Pull the chiller shelf up from rail to remove.

## Fresh dial



When the humidity controller in the closed position, it allows fresh fruit and vegetables to be stored longer.

In case of the crisper is totally full, the fresh dial is located in front of crisper, should be opened. By means of this the air in the crisper and humidity rate will be controlled and endurance life will be increased.

If you see any condensation on glass shelf, humidity control should be taken into the open positions.

***Visual and text descriptions on the accessories section may vary according to the model of your appliance.***

## ARRANGING FOOD IN THE APPLIANCE

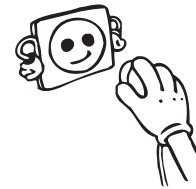
- For normal operating conditions, adjusting the temperature value of the cooler partition of the fridge to 4°C will be enough.
- To reduce humidity and consequent increase of frost never place liquids in unsealed containers in the refrigerator. Frost tends to concentrate in the coldest parts of the evaporator and in time will require more frequent defrosting.
- Never place warm food in the refrigerator. Warm food should be allowed to cool at room temperature and should be arranged to ensure adequate air circulation in the refrigerator compartment.
- Nothing should touch on the back wall as it will cause frost and the packages can stick on the back wall. Do not open the refrigerator door too frequently.
- Arrange the meat and cleaned fish(wrapped in packages or sheets of plastic) which you will use in 1-2 days, in the bottom section of the refrigerator compartment(that is above the crisper) as this is the coldest section and will ensure the best storing conditions.
- You can put the fruits and vegetables into crisper without packing.

**NOTE:** Potatoes, onions and garlic should not be stored in the refrigerator.

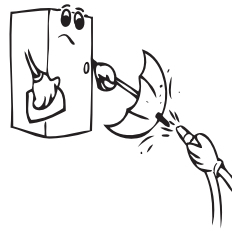
Food	Maximum Storing time	Where to place in the fridge department
<b>Vegetables and fruits</b>	1 week	Vegetable bin
<b>Meat and fish</b>	2 - 3 Days	Wrapped in plastic foil or bags or in a meat container (on the glass shelf)
<b>Fresh cheese</b>	3 - 4 Days	In special door shelf
<b>Butter and margarine</b>	1 week	In special door shelf
<b>Bottled products milk and yoghurt</b>	Until the expiry date recommended by the producer	In special door shelf
<b>Eggs</b>	1 month	In the egg shelf
<b>Cooked food</b>		All shelves

## CLEANING AND MAINTENANCE

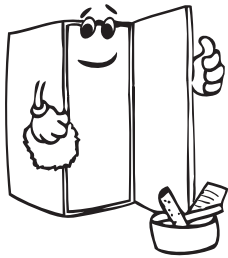
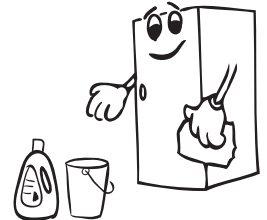
- Disconnect unit from the power supply before cleaning.



- Do not clean the appliance by pouring water.



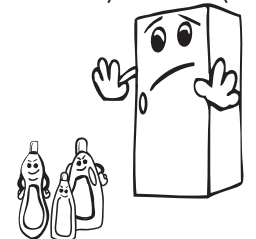
- The refrigerator should be cleaned periodically using a solution of bicarbonate of soda and lukewarm water



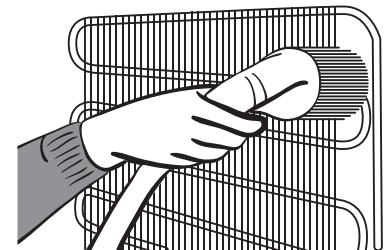
- Clean the accessories separately with soap and water. Do not clean them in the washing machine.



- Do not use abrasive products, detergents or soaps. After washing, rinse with clean water and dry carefully. When the cleaning operations have been completed reconnect the plug of the unit with dry hands.



- You should clean the condenser (back of the appliance) with broom ones a year in order to provide energy saving and increase the productivity.



### **THE POWER SUPPLY MUST BE DISCONNECTED.**

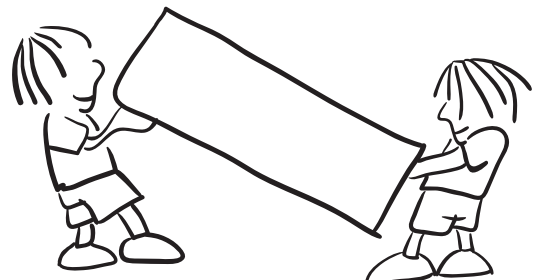
#### **Replacing LED Lighting**

If your fridge has LED lighting contact the help desk as this should be changed by authorized personnel only.

## SHIPMENT AND REPOSITIONING

- Original package and foam may be kept for re-transportation (optionally).
- You should fasten your fridge with thick package, bands or strong cords and follow the instructions for transportation on the package for re-transportation.
- Remove movable parts (shelves, accessories, vegetable bins etc.) or fix them into the fridge against shocks using bands during re-positioning and transportation.

**! Carry your fridge in the upright position.**



## Repositioning the door

- It is not possible to change the opening direction of your fridge door, if the door handles on your fridge are installed from the front surface of the door.
- It is possible to change the opening direction of the door on models without any handles.
- If the door opening direction of your fridge may be changed, you should contact the nearest Authorized Service to have the opening direction changed.

## BEFORE CALLING SERVICE

### Check Warnings;

Your fridge warns you if the temperatures for cooler is in improper levels or when a problem occurs in the appliance.

ERROR TYPE	ERROR TYPE	WHY	WHAT TO DO
SR	"Failure Warning"	There is/are some part(s) Out of order or there is a failure in cooling process	Call Service for assistance as soon as possible.

If your fridge is not working properly, it may be a minor problem, therefore check the following, before calling an electrician to save time and money.

### What to do if your appliance does not operate;

#### Check that;

- There is no power,
- The general switch in your home is disconnected ,
- The socket is not sufficient. To check this, plug in another appliance that you know which is working into the same socket.

### What to do if your appliance performs poorly;

#### Check that;

- You have not overloaded the appliance ,
- The fridge temperature set to 2.
- The door is closed perfectly ,
- There is no dust on the condenser ,
- There is enough place at the rear and side walls.

### If your fridge is operating too loudly;

#### Normal Noises

**Short cracking:** Heard when the thermostat switches the compressor on/off.

**Compressor noise:** Normal motor noise. This noise means that the compressor operates normally Compressor may cause more noise for a short time when it is activated.

**Bubbling noise and splash:** This noise is caused by the flow of the refrigerant in the tubes of the system.

**Water flow noise:** Normal flow noise of water flowing to the evaporation container during defrosting. This noise can be heard during defrosting.

**Air Blow Noise:** Normal fan noise. This noise can be heard in fridges during normal operation of the system due to the circulation of air.

**If the edges of fridge cabinet that the door joint contact are warm;**

Especially in summer (hot weather), the surfaces that the joint contact may get warmer during the operation of the compressor, this is normal.

**If humidity builds up inside the fridge;**

- Are all food packed properly? Are the containers dried before placing them in the fridge?
- Is the fridge's door opened frequently? Humidity of the room gets in the fridge when the door is opened. Humidity build up will be faster when you open the door more frequently, especially if the humidity of the room is high.

**If the door is not opened and closed properly;**

- Do the food packages prevent closing of the door?
- Are the door compartments, shelves and drawers placed properly?
- Are door joints broken or torn?
- Is your fridge on a level surface?

**IMPORTANT NOTES:**

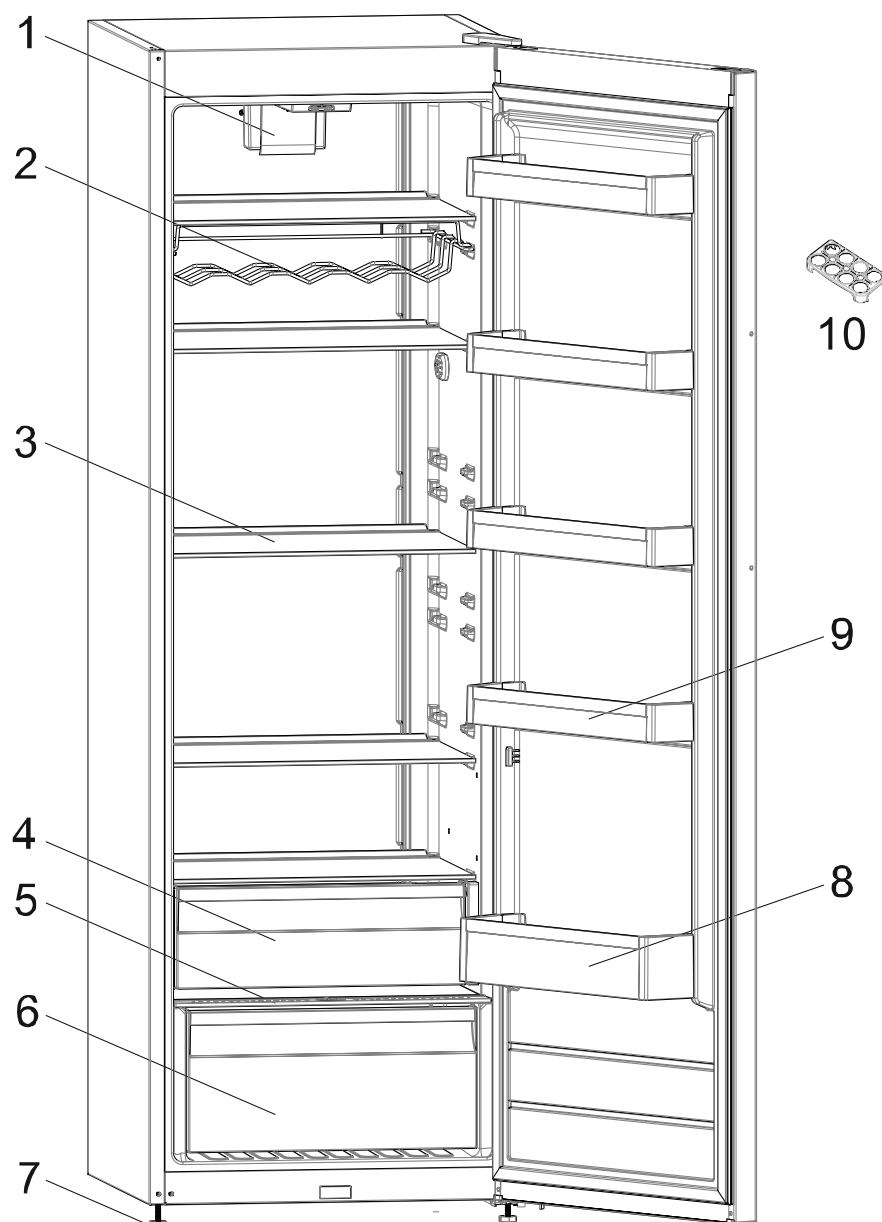
- Compressor protection function will be activated after sudden power breakdowns or after unplugging the appliance, because the gas in the cooling system is not stabilized yet. Your appliance will start after 5 minutes, there is nothing to worry about.
- If you will not use your fridge for a long time (e.g. in summer holidays) unplug it. Clean your fridge according to chapter "CLEANING AND MAINTENANCE" and leave the door open to prevent humidity and smell.
- To stop the appliance completely, unplug from main socket (for cleaning and when the door is left open)
- If the problem persists after you have followed all the instructions above, please consult to the nearest Authorized service.
- The lifetime of your appliance stated and declared by the Department of the Industry is 10 years (the period for retaining parts required for the proper functioning of the appliance).

## **Tips for saving energy**

1. Install the appliance in a cool, well ventilated room , but not in direct sunlight and not near heat source (radiator, cooker.. etc). Otherwise use an insulating plate.
2. Allow ward food and drinks to cool down outside the appliance.
3. When placing, drinks and slops they must be covered. Otherwise humidity increases at the appliance. Therefore the working time gets longer. Also covering drinks and slops helps to save smell and taste.
4. When placing food and drinks, open the appliance door as briefly as possible.
5. Keep close the covers of any different temperature compartment in the appliance (crisper, chiller ...etc ).
6. Door gasket must be clean and pliable. Replace gaskets if worn.



# THE PARTS OF THE APPLIANCE AND THE COMPARTMENTS



This presentation is only for information about the parts of the appliance.  
Parts may vary according to the appliance model.

- 1) Turbo fan \*
- 2) Wine rack / bottle shelf \*
- 3) Refrigerator shelves
- 4) Top crisper / Chiller shelves \*
- 5) Bottom crisper cover
- 6) Bottom crisper

- 7) Levelling feet
- 8) Bottle shelf
- 9) Door shelves
- 10) Egg holder

\* In some models